



# ULTRA CORPORATION LIMITED

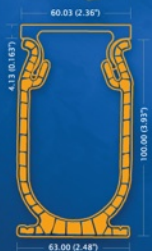
Suit 1505-6, Albion Plaza, 2-6 Granville Rd.  
Tsimshatsui, Kowloon, Hong Kong

E-mail: [info@ultra-corporation.com](mailto:info@ultra-corporation.com)

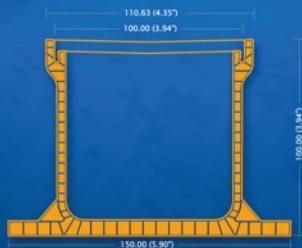
Website: [www.ultra-corporation.com](http://www.ultra-corporation.com)



- Easy and quick to install
- Available in 1, 2 & 4 pc. consumer packs
- Unobtrusive and aesthetically pleasing
- State-of-the-art design
- High water flow capacity
- Competitive price and numerous uses
- Fully anodised aluminum top grating (Colour powder-coatings options available)



ULTRA DRAIN (100 X 60)

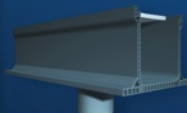


ULTRA DRAIN (100 X 110)

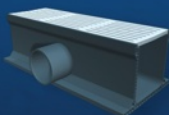


ULTRA DRAIN (40 X 110)

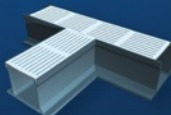
## PARTS & FITTINGS



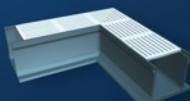
Bottom Outlet



Side Outlet



T-Piece



Internal/External Corner



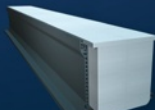
End Outlet



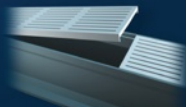
End Caps



Joiner



Poly Former



Cleaning Section ALCS



## SPECIFICATIONS

- State-of-the-art drainage system specifically designed for use around swimming pools, patios, decks, paved areas, anywhere where water needs to be collected then the Ultra Drain range is a must to be specified and installed.
- Sizes available 100mm x 40mm , 100mm x 100mm, 100 x 60mm. Lengths vary from 1.2 -2.80m depending on the country (.ie Holland, Belgium 1.2m, Australia and New Zealand 2.80m)
- Capable of withstanding domestic vehicles when set in concrete.
- Base made of PVC, fluted for extra strength and weight.
- Smooth PVC base enhances water flow and assists with the self cleaning of the drain.
- A dedicated 260mm cleaning section is available if required.
- All fittings are easily connected using PVC solvent glue.
- Accessories available, right angle corners, end caps, end outlets, vertical and horizontal outlets, tee pieces, and cleaning sections.
- PVC base is supplied with a special poly - former insert to ensure that the base will maintain its shape during installation and keep the drain 100% clean during construction.
- The Alloy Top is extruded aluminum and then anodized to marine grade specifications.
- For Driveways we recommend the use of our textured top which is abrasive resistant.
- The Alloy Top for the 100mm drain comes with a 3mm fall to the centre aiding the water collection to the drain base.
- We have available a tamper proof Alloy Top that can be LOCKED into place for added safety for use in public installations or schools.



**ULTRA**  
CORPORATION LIMITED